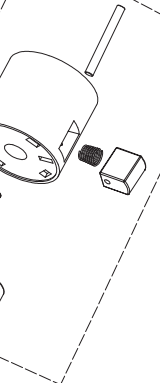
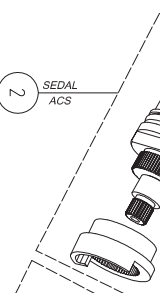
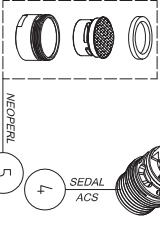


Shower set drawings are only for your reference

**EQUIPO DUCHA  
SHOWER SET**

|   |                        |   |
|---|------------------------|---|
| A | TELEFONO<br>HANDSHOWER | ABS Cromado, 5 funciones                                |
| B | FLECHO<br>HOSE         | ACERO INOXIDABLE 1,75m ACS 1/2"-1/2"<br>STAINLESS STEEL |



| Nr. | DESCRIPCION<br>DESCRIPTION                            | CANT.<br>QTY. | MATERIAL Y TRATAMIENTO<br>MATERIAL & TREATMENT                 |
|-----|---|---------------|--|
| 1   | MANEJA TERMOSTATICA<br>THERMOSTATIC HANDLE            | 1             | ABS Cromado  |
| 2   | MANEJA TERMOSTATICA<br>THERMOSTATIC HANDLE            | 1             | Bulbo de Aereo<br>Vaz Bulb                                     |
| 3   | CARTUJO TORNILLO FIJACION<br>CARTRIDGE FIXATION SCREW | 1             | ACERO INOXIDABLE 1/6x1   |
| 4   | INVERSOR BANO-DUCHA<br>BATH SHOWER DIVERTER           | 1             | LATON Cromado<br>Chromed BRASS                                 |
| 5   | AREFADOR<br>AERATOR                                   | 1             | Perlator DL M28 type D Plastic Net                             |
| 6   | CUERPO FUNCION<br>CASTING BODY                        | 1             | LATON Cromado<br>Chromed BRASS                                 |
| 7   | CARTUJO INVERSOR<br>DIVERTER CARTRIDGE                | 1             | Discos cerámicos giro 80°<br>Ceramic disk 80° turn             |
| 8   | MANEJA ON-OFF<br>ON-OFF HANDLE                        | 1             | ABS Cromado  |
| 9   | UNION TORCA<br>O-RING                                 | 2             | NBR Ø14, 2x2,4   |
| 10  | TUERCA TORCA<br>SLIDING NUT                           | 2             | LATON Cromado<br>Chromed BRASS                                 |
| 11  | CONECTOR<br>CONNECTOR                                 | 2             | LATON Cromado<br>Chromed BRASS                                 |
| 12  | VALVULA ANTIRETORNO<br>CHECK VALVE                    | 2             | POM Ø15x16-DN10  |
| 13  | FLABON<br>FLANGE                                      | 2             | ACERO INOXIDABLE 18/8 Cromado<br>STAINLESS STEEL 18/8 Chromed  |
| 14  | UNION PLANA CON FILTRO<br>FLAT JOINT WITH FILTER      | 2             | NBR + ACERO INOXIDABLE 24x15x3                                 |
| 15  | EXCENTRICA<br>ECCENTRIC NUT                           | 2             | LATON Cromado con reductor para<br>Chromed BRASS with noseless |
| 16  | UNION TORCA<br>O-RING                                 | 1             | NBR  |
| 17  | CONECTOR<br>CONNECTOR                                 | 1             | LATON Cromado<br>Chromed BRASS                                 |
| 18  | CONJUNTO BARRA EXTENSIBLE<br>EXTENDABLE BAR SET       | 1             | LATON Cromado<br>Chromed BRASS                                 |
| 19  | SOPORTE DESLIZANTE<br>SLIDING HOLDER                  | 1             | ABS Cromado  |
| 20  | RAQUADOR<br>RAMSHOWER                                 | 1             | ABS Cromado  |
| 21  | CONJUNTO FIJACION<br>FIXATION BAR SET                 | 1             | LATON Cromado<br>Chromed BRASS                                 |

**clever**

|         |                              |
|---------|------------------------------|
| MODELO  | TERMOSTATICO C/TO BANO-DUCHA |
| MODEL   | THERMOSTATIC BATH-SHOWER SET |
| EDICION | 1                            |
| FECHA   | 27.11.2014                   |
| SERIE   | NINE                         |
| EDICION | 1                            |
| FECHA   | 27.11.2014                   |
| MODELO  | TERMOSTATICO C/TO BANO-DUCHA |
| MODEL   | THERMOSTATIC BATH-SHOWER SET |
| EDICION | 1                            |
| FECHA   | 27.11.2014                   |

This drawing and design is the property of CLEVER and must not be copied or communicated to a third party without written permission.